



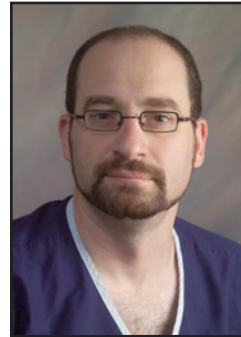
### Clinical Research



**Arroyo-Balaguer, Margarita**  
School of Medicine  
Critical Care Medicine



**Al Hashash, Jana**  
School of Medicine  
Medicine  
General Internal Medicine



**Ben-Ari, Alon**  
School of Medicine  
Anesthesiology



**Brown, Elke**  
School of Medicine  
Physical Medicine and  
Rehabilitation



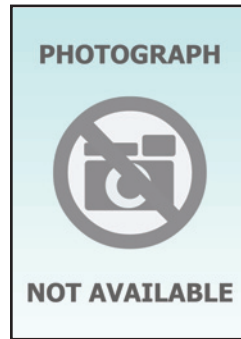
**Buckalew, Neilly**  
School of Medicine  
Medical Student



**Carneiro, Benedito**  
School of Medicine  
Medicine  
Hematology/Oncology



**Carneiro, Raquel**  
School of Medicine  
Medicine  
Endocrinology &  
Metabolism



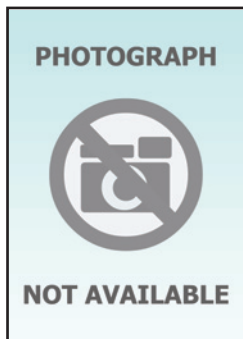
**Dovey, Serena**  
School of Medicine  
OB/GYN and  
Reproductive Sciences



**Erb, Teresa Mancuso**  
School of Medicine  
Reproductive  
Endocrinology



**Fakhri, Abid**  
School of Medicine  
Medicine



**Ghetti, Chiara**  
School of Medicine  
OB/GYN and Reproductive  
Sciences



**Gillison, Timothy**  
School of Medicine  
Medicine  
Hematology/Oncology



**Goldberg, Alison**  
School of Medicine  
Medical Student



**Gursahaney, Priya**  
School of Medicine  
Medical Student



# University of Pittsburgh

## Institute for Clinical Research Education 2008-2009



**Hoskins, Ebony**  
School of Medicine  
Gynecologic Oncology



**Kalan, Amanda**  
School of Medicine  
Maternal/Fetal Medicine



**Lareau, Susan**  
School of Medicine  
OB/GYN and  
Reproductive Sciences



**Machi, Mari Stephanie**  
School of Medicine  
Medical Student



**Mahmud, Hussain**  
School of Medicine  
Medicine  
General Internal Medicine



**Mason, Phillip**  
School of Medicine  
Critical Care Medicine



**McBee Jr, William**  
School of Medicine  
Gynecologic Oncology



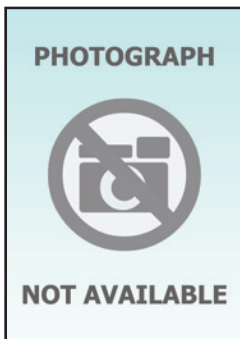
**McGee, John**  
School of Health and  
Rehabilitation Sciences  
Physical Therapy



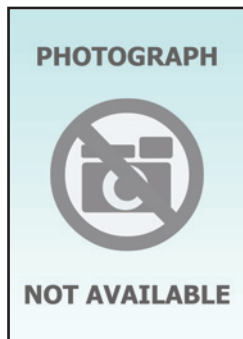
**Mendez, Iria**  
School of Medicine  
Psychiatry



**Moawad, Nashat**  
School of Medicine  
OB/GYN and  
Reproductive Sciences  
Gynecologic Specialties



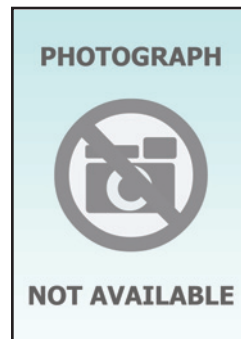
**Osawa, Ryosuke**  
School of Public Health  
Medicine  
Infectious Diseases  
and Microbiology



**Papachristou, Georgios**  
School of Medicine  
Medicine  
Gastroenterology



**Pomerantz, Reva**  
School of Medicine  
Medical Student



**Raina, Arvind**  
School of Medicine  
Medical Student



**Rajakumar, Kumaravel**  
School of Medicine  
Pediatrics  
General Academic  
Pediatrics



# University of Pittsburgh

## Institute for Clinical Research Education 2008-2009



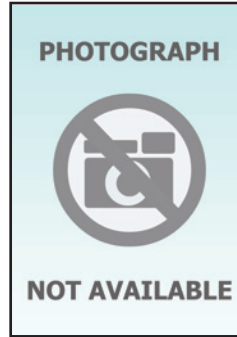
**Sanchez-Ortiz, Alvaro**  
School of Medicine  
Medicine  
General



**Sanfilippo, Kristen**  
School of Medicine  
Medicine



**Schneider, Michael**  
School of Health and  
Rehabilitation Sciences  
Physical Therapy



PHOTOGRAPH

NOT AVAILABLE

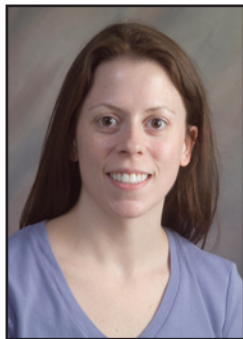
**Sidonio, Robert**  
School of Medicine  
Pediatrics



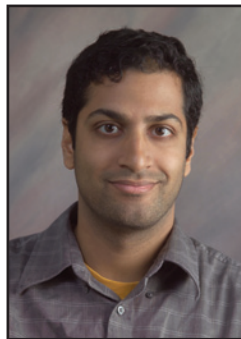
**Simon, Peter**  
School of Medicine  
Critical Care Medicine



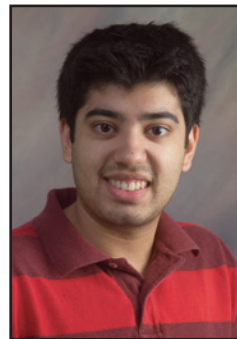
**Spangler, Emily**  
School of Medicine  
Medical Student



**Strah, Heather**  
School of Medicine  
Medicine



**Sundaram, Vinay**  
School of Medicine  
Medicine  
Gastroenterology



**Thaker, Nikhil**  
School of Medicine  
Medical Student



**Thorson, Heidi**  
School of Medicine  
OB/GYN and  
Reproductive Sciences  
MFM/Genetics



**Torok, Kathryn**  
School of Medicine  
Pediatrics  
Rheumatology



PHOTOGRAPH

NOT AVAILABLE

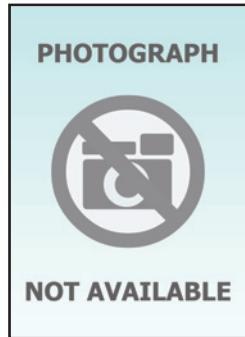
**Younes, Hashem**  
School of Medicine  
Medicine  
Hematology/Oncology



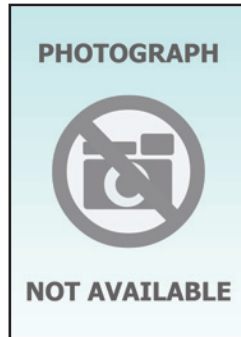
**Zaidi, Syed**  
School of Medicine  
Neurology



### Medical Education



**Childers, Julie**  
School of Medicine  
Medicine  
General Internal Medicine



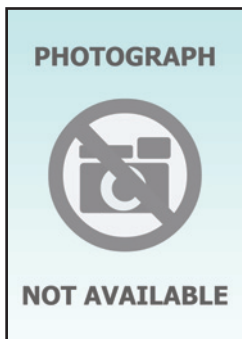
**Claxton, Rene**  
School of Medicine  
Medicine



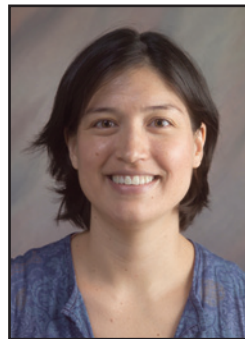
**Falcione, Bonnie**  
School of Pharmacy  
Pharmacy & Therapeutics



**Kaldas, Hoda**  
School of Medicine  
Nephrology



**Shelesky, Gretchen**  
School of Medicine  
Family Medicine



**Suffoletto, Jo-Anne**  
School of Medicine  
Medicine  
General Internal Medicine



**Wilkie, Laurie**  
School of Medicine  
General Academic  
Pediatrics

### Doctor of Philosophy in Clinical and Translational Science



**Primack, Brian**  
Department of General  
Internal Medicine



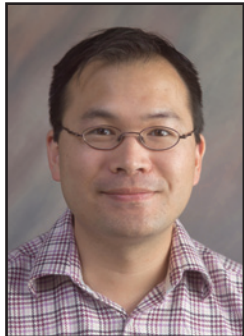
**Tarhini, Ahmad**  
Department of  
Hematology/Oncology



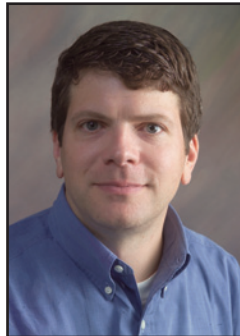
**Tawbi, Hussein**  
Department of  
Hematology/Oncology



**Non-Degree  
Students**



**Bao, Philip**  
School of Medicine  
Surgery  
Surgical Oncology



**Chalifoux, Thomas**  
School of Medicine  
Anesthesiology



**Castillo, Jose Luis**  
School of Medicine  
Surgery  
General



**Ingham, Sheila**  
School of Medicine  
Orthopedic Surgery



**Rice, Thomas**  
School of Medicine  
Medicine  
Pulmonary, Allergy and  
Critical Care Medicine



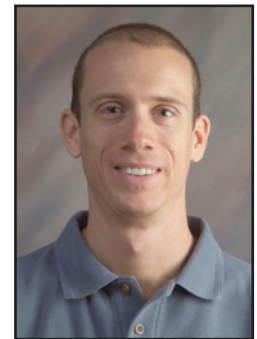
**Rocha Lima, Breno da**  
School of Medicine  
Medicine  
General Internal Medicine



**Rubiano, Andres Mariano**  
School of Medicine  
Surgery  
General



**Salonia Schipper, Rosanne**  
School of Medicine  
Critical Care Medicine



**Sheperd, John**  
School of Medicine  
OB/GYN